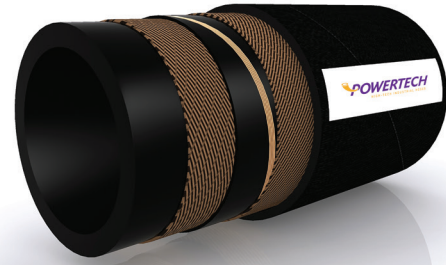


## CHD081EN

EN 12115 Chemical Delivery Hose,  
27 Bar



| Code             | ID (mm) | OD (mm) | Wall (mm) | Working Pressure (bar) | Burst Pressure (bar) | Bending Radius (mm) | Weight (kg/m) | Max. Length (m) |
|------------------|---------|---------|-----------|------------------------|----------------------|---------------------|---------------|-----------------|
| CHD081EN-102x8.5 | 102     | 119     | 8.5       | 27                     | 81                   | NA                  | 3,89          | 40              |

### Application

Heavy duty conductive chemical delivery hose suitable for a wide range of chemical products

### Temperature

-40°C to +120°C

### Features

Durable, robust, kink-resistant, conductive, highly resistant to chemicals and acids

### Type

Mandrel built

### Tube

Highly chemical resistant synthetic compound, black, smooth, resistant to corrosive chemicals and solvents

### Reinforcement

High tensile textile cord fabric, two crossing anti-static copper wires

### Cover

Weather, ozone and abrasion resistant synthetic rubber compound, black, smooth with cloth impression

### Standard/Notice

EN 12115:2011

### Marking

Embossed or Transfer Label

### Standards/Approvals

EN 12115:2011

### Comments